



WHITE MED VILLAS



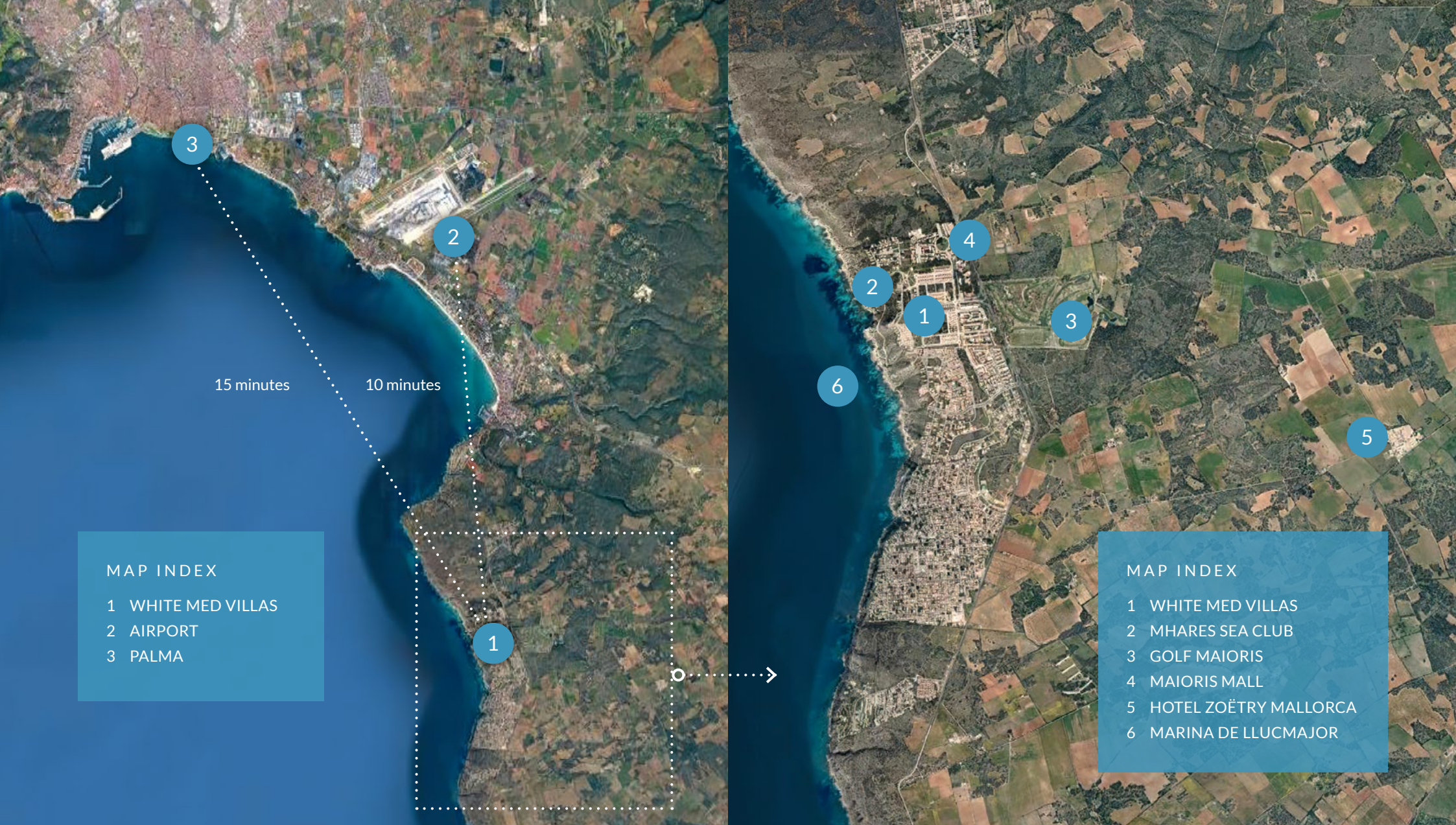


16 ELEGANT AND MODERN VILLAS

Located at the incomparable natural environment of the Lluçmajor marina, White Med Villas is a development of 16 exclusive villas designed with criteria of comfort, quality and safety, both in the configuration and size of the different rooms and on the design of the facilities, materials and finishes.

A scenic view of a body of water, likely a lake or bay, with mountains in the background. The water is a deep blue, and the mountains are a hazy, light blue. In the foreground, there are pink flowers, possibly cherry blossoms, with green leaves. The flowers are in sharp focus, while the background is blurred. A semi-transparent dark blue rectangle is overlaid on the water, containing the text "A MAGICAL ENVIRONMENT" in white, uppercase letters.

A MAGICAL
ENVIRONMENT



MAP INDEX

- 1 WHITE MED VILLAS
- 2 AIRPORT
- 3 PALMA

MAP INDEX

- 1 WHITE MED VILLAS
- 2 MHARES SEA CLUB
- 3 GOLF MAIORIS
- 4 MAIORIS MALL
- 5 HOTEL ZOËTRY MALLORCA
- 6 MARINA DE LLUCMAJOR

WHITE MED VILLAS

Located 10 minutes from the Palma international airport and 15 minutes from Palma.
Next to the natural environment of Llucmajor's marina, as well as Mhares Sea Club and Maioris Golf Club.



MHARES SEA CLUB

Overlooking some of Mallorca's most crystal-clear waters, it is designed to guarantee an unforgettable experience in a privileged location.



LLUCMAJOR'S MARINA

The villas are located next to the natural environment of Lluçmajor's marina.
Enjoy its cristal clear turquoise waters and its Mediterranean views.



MAIORIS GOLF CLUB

An 18 hole course, located 9 minutes by foot, is the best option to play golf in Mallorca.
Enjoy its mediterranean landscape with olive trees, pine trees and carob trees, four lakes and two greens.
The facilities include a golf academy, practice ground, club house, bar and restaurant.



PALMA

One of the must-visits in Mallorca is its capital, Palma de Mallorca. Known above all for its sun and beach tourism, the city offers the visitor much more: exquisite bars and restaurants, great shopping possibilities and an interesting cultural and culinary variety.

A full-page background image of a calm ocean with gentle ripples under a clear, light blue sky. A semi-transparent, dark teal rectangular box is centered horizontally and vertically, containing the text "FEEL THE SILENCE" in white, uppercase, sans-serif font.

FEEL
THE SILENCE



SILENCE. CALM. CLEARNESS.

The care in architecture and design must be surrounded by a quiet environment and comfort which provides the best sound insulation. Because happiness can be contained in a whisper.



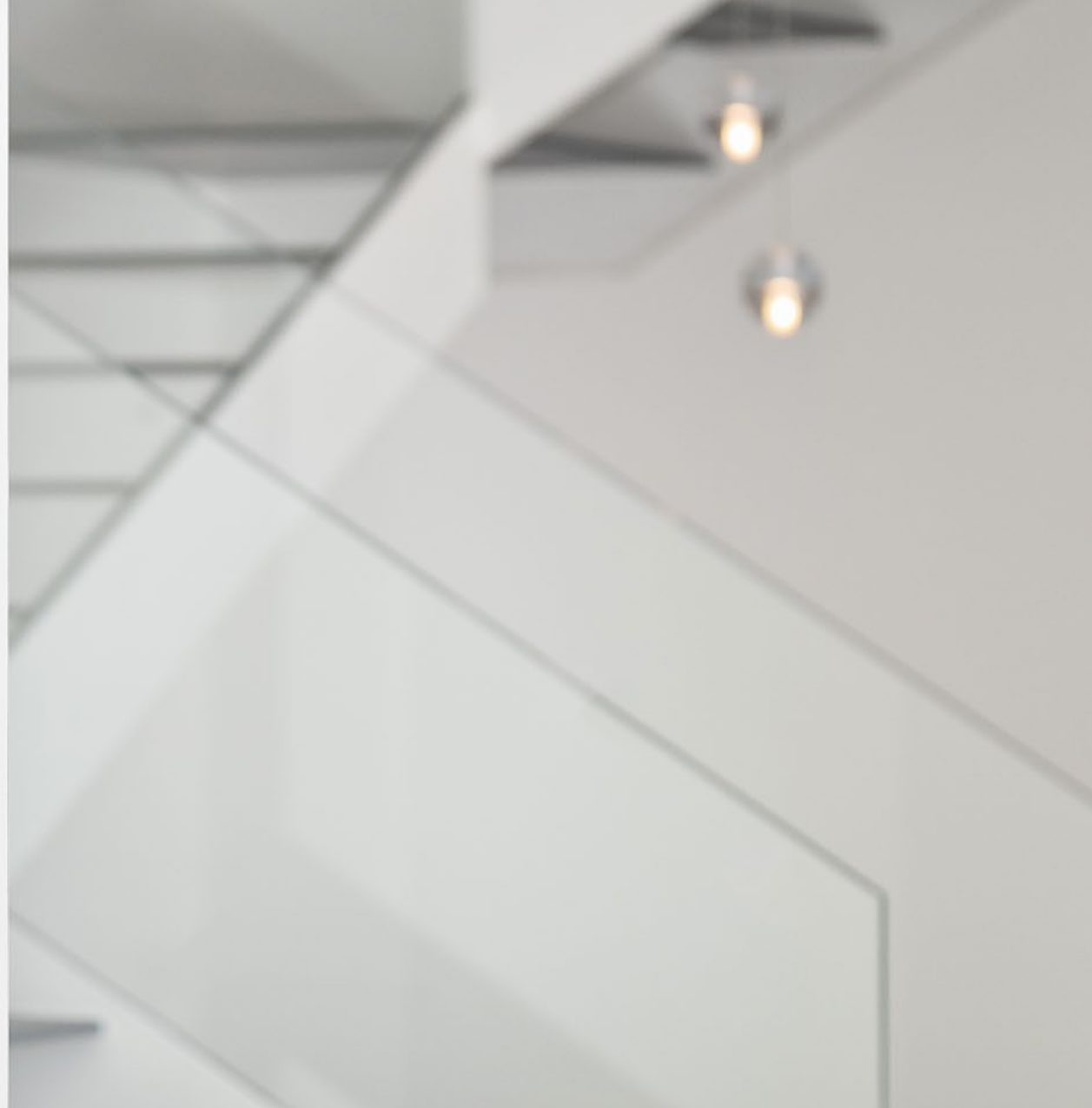
ORDER, BALANCE, HARMONY

The villas are built from the best materials, combining reinforced concrete, natural stone, porcelain stoneware, glass, galvanized steel and aluminum. The exterior carpentry, of avant-garde design, combines resistance, safety, lightness and luminosity.



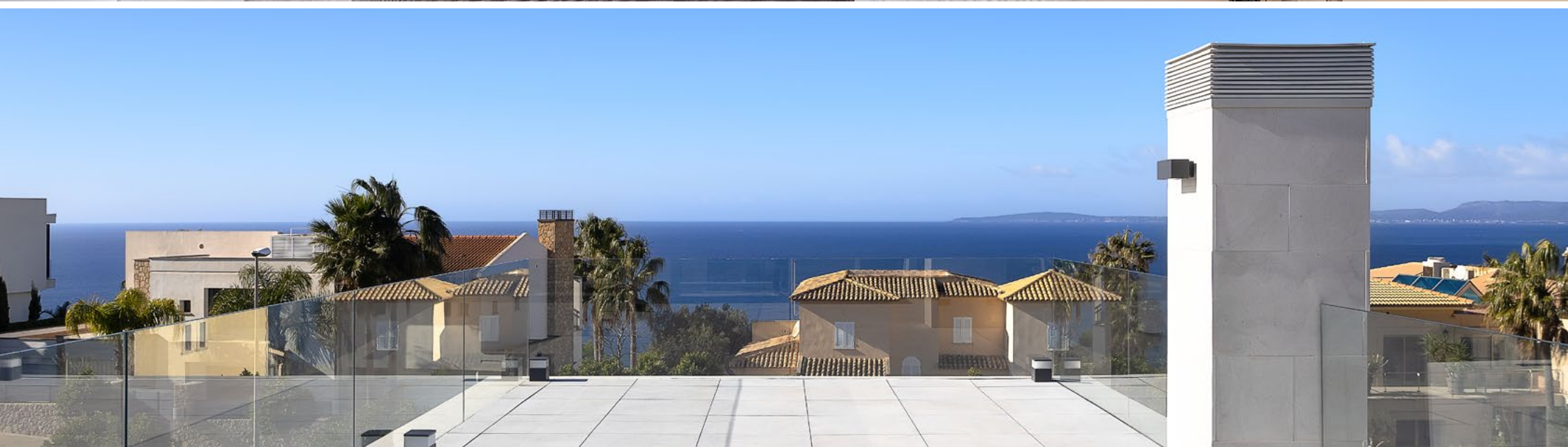
COZY AND SUSTAINABLE

Interior divisions with thermo-acoustic insulation and air conditioning system with aerothermal technology, with lower consumption and low environmental impact. Modern design kitchen without handles with central island, fully equipped with high-end appliances.



SECURITY AND COMFORT ON EVERY LEVEL

Located in one of the most exclusive residential areas of the island, the perfect location for those looking for a quiet and peaceful stay, with total privacy and the most sophisticated equipment in home automation and security.



NICE SEA VIEWS

Surrounded by nature and built high above the splendid Lluçmajor marina, the villas provide an ideal panoramic view to enjoy relaxation and tranquility in a unique architectural setting.

A photograph of a modern building's exterior during the 'blue hour'. The building features light-colored, possibly stone or concrete, walls and a prominent section with dark, horizontal slatted louvers that are illuminated from within, creating a warm glow. A semi-transparent dark blue rectangular box is overlaid on the left side of the image, containing the text 'A UNIQUE ARCHITECTURAL STYLE' in white, all-caps, sans-serif font. The sky in the background is a mix of deep blue and soft purple hues.

A UNIQUE
ARCHITECTURAL
STYLE



A UNIQUE STYLE

An exclusive design that is influenced by a unique natural environment, searching for the amplitude of the open spaces, the intensity of the shapes, the nobility of the materials and the delight in the details.



DESIGN AT ITS FINEST

The careful interior design is based on the exclusivity of finishes and materials.
It emphasizes the large spaces that open up to the spectacular views and the abundance of interior light.



EXCLUSIVITY THROUGH SPACE

The outdoor areas are designed looking for a concept of luxury that resides in the spaciousness and open spaces. The pool and the terraces allow you to fully enjoy a privileged environment.



SAND VILLA

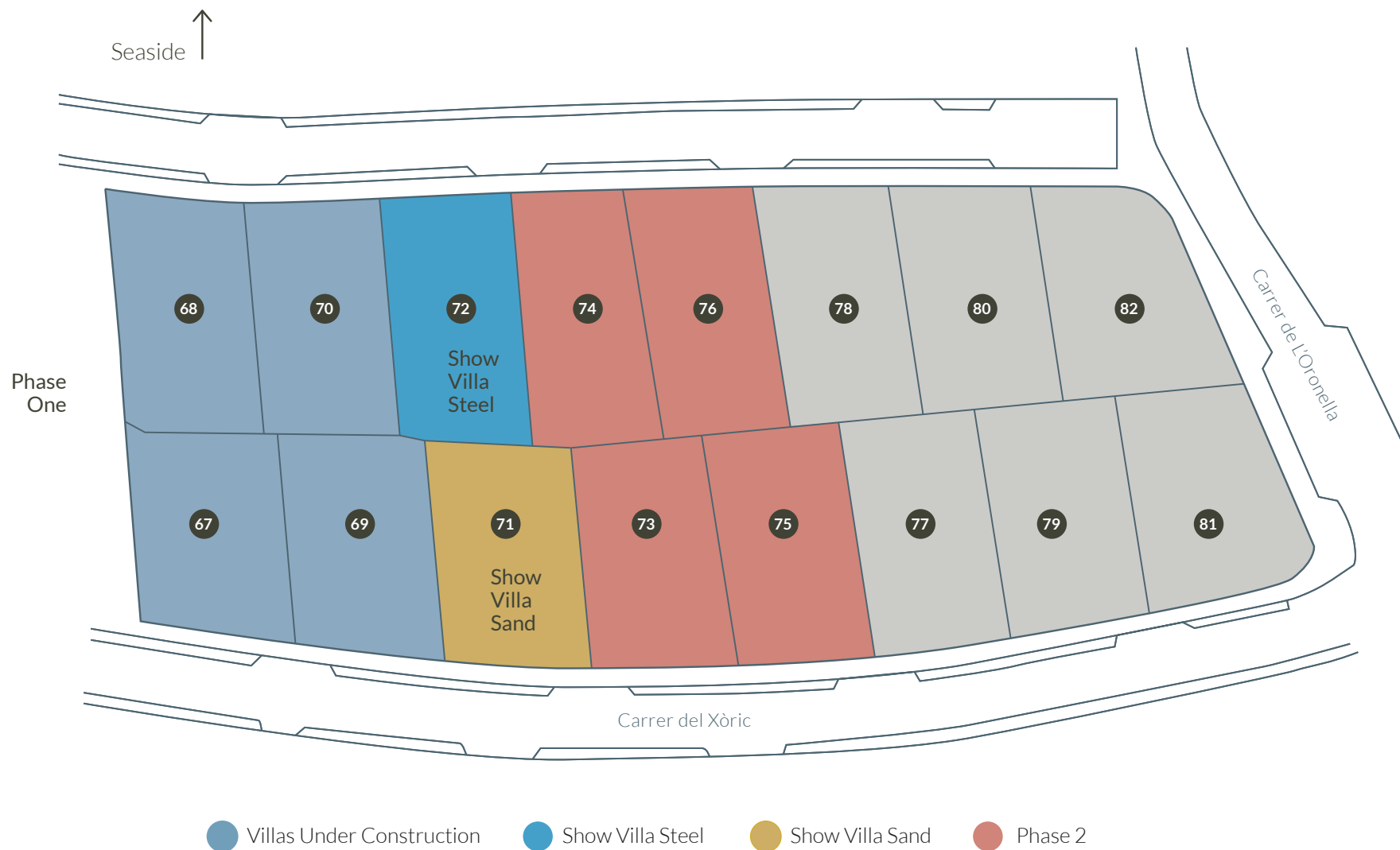
STEEL VILLA

ADAPTED TO YOU

Starting from two avant-garde proposals, *Villa Sand* and *Villa Steel*, White Med Villas also offers the possibility of a flexible and personalized design adapted to the tastes of its owners, allowing them to intensely enjoy the spacious tranquility of their home.



A NEW CONCEPT
IN LIFESTYLE



GENERAL LAYOUT

Each one of these 16 exclusive villas has got its own personality, maintaining the unique architectural style of the White Med Villas development. The 16 single-family villas will be built in different phases. There are currently two show villas (No. 71 and No. 72).

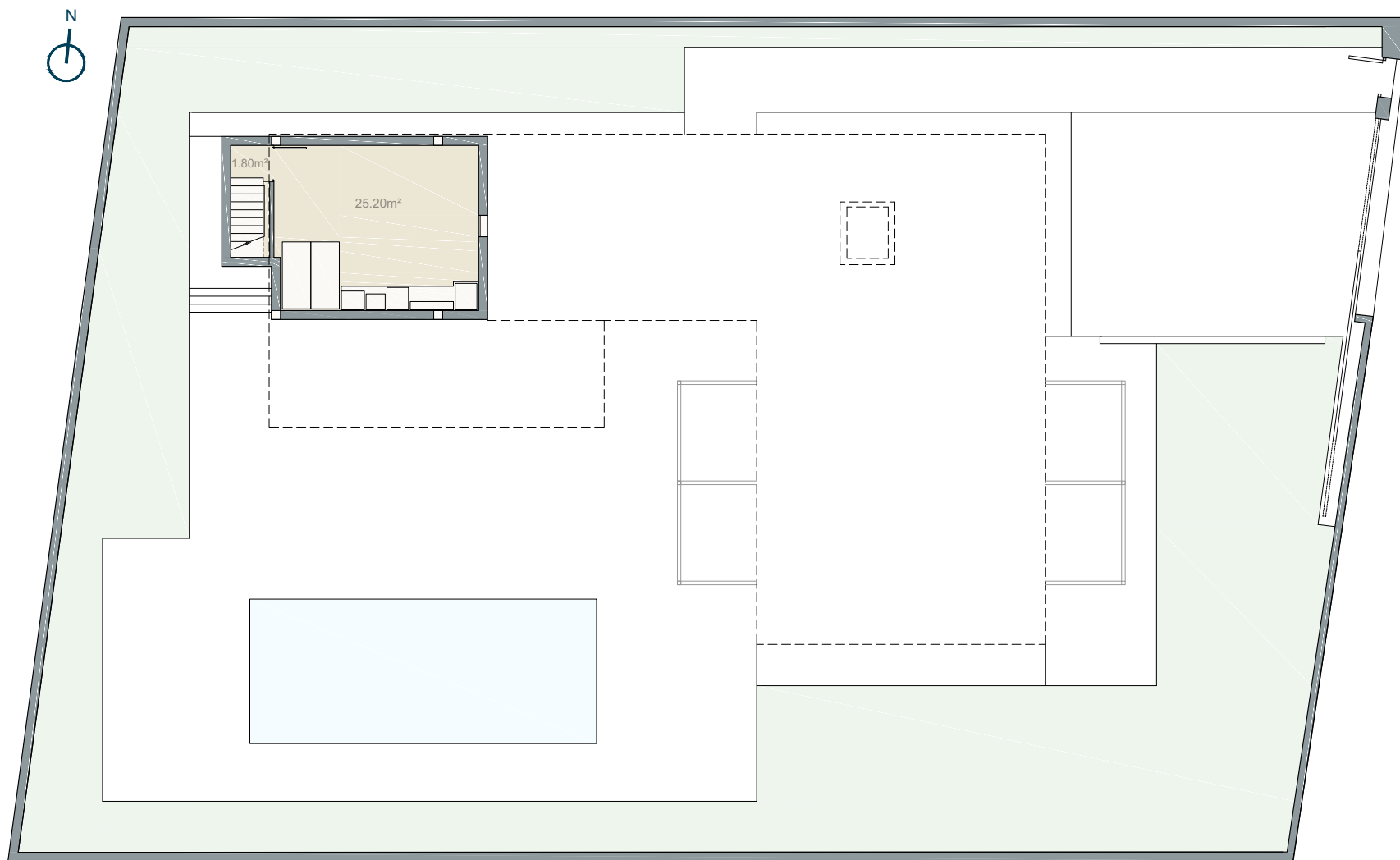


SAND VILLA



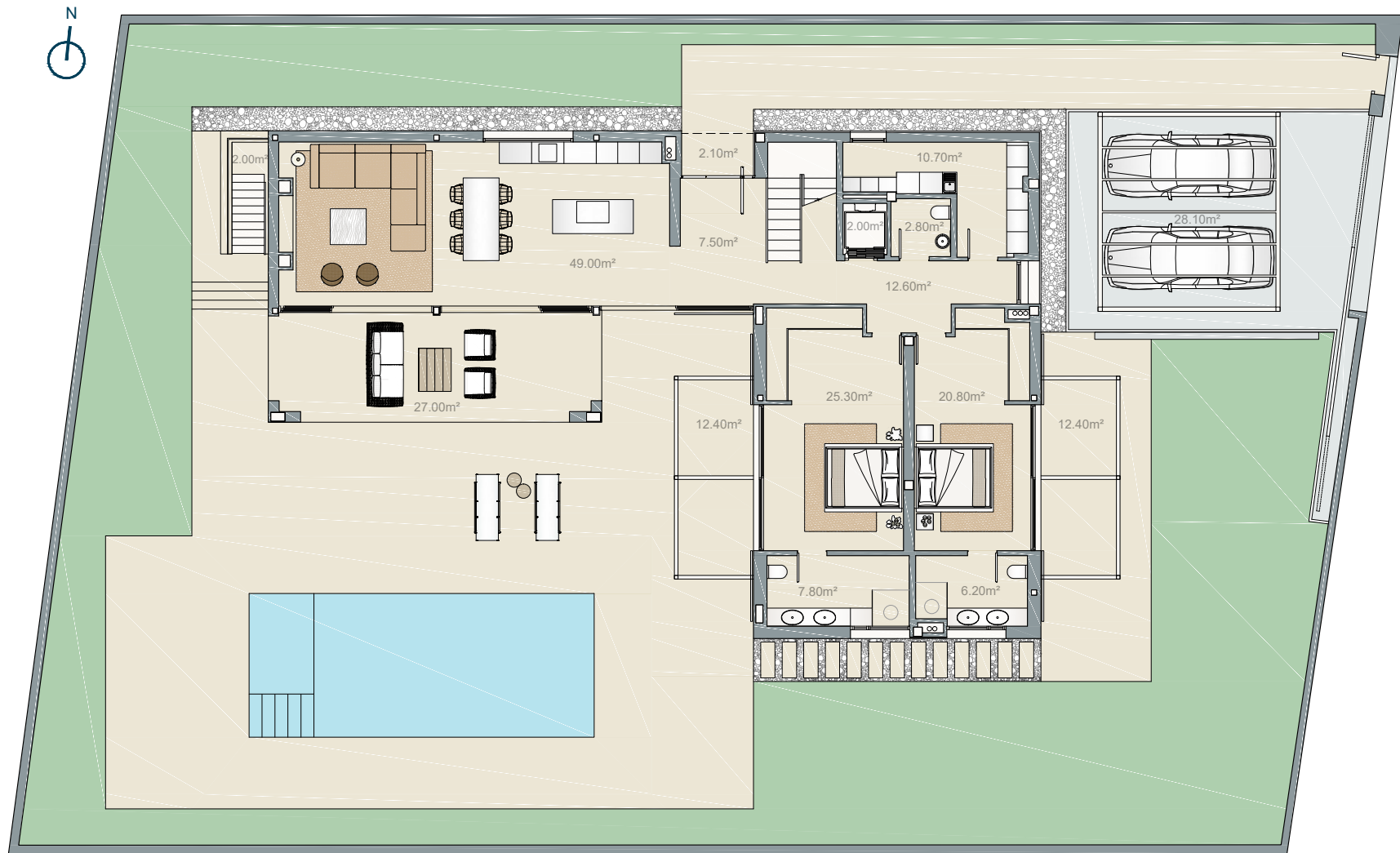
SAND VILLA

273 sq. mt. built.
814 sq. mt. terraces & garden.
3 bedrooms & 4 bathrooms.



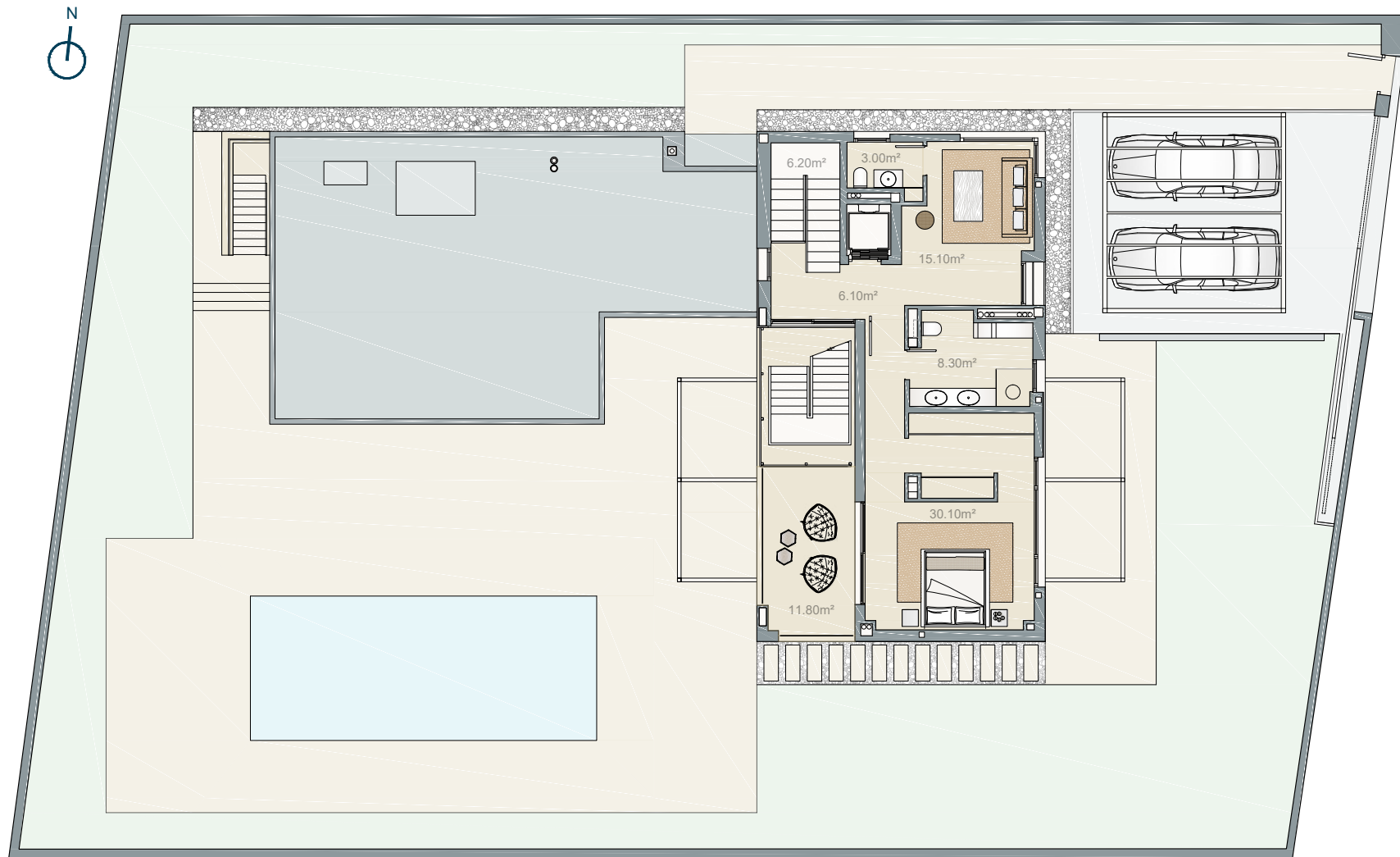
SAND VILLA / BASEMENT

273 sq. mt. built.
814 sq. mt. terraces & garden.
3 bedrooms & 4 bathrooms.



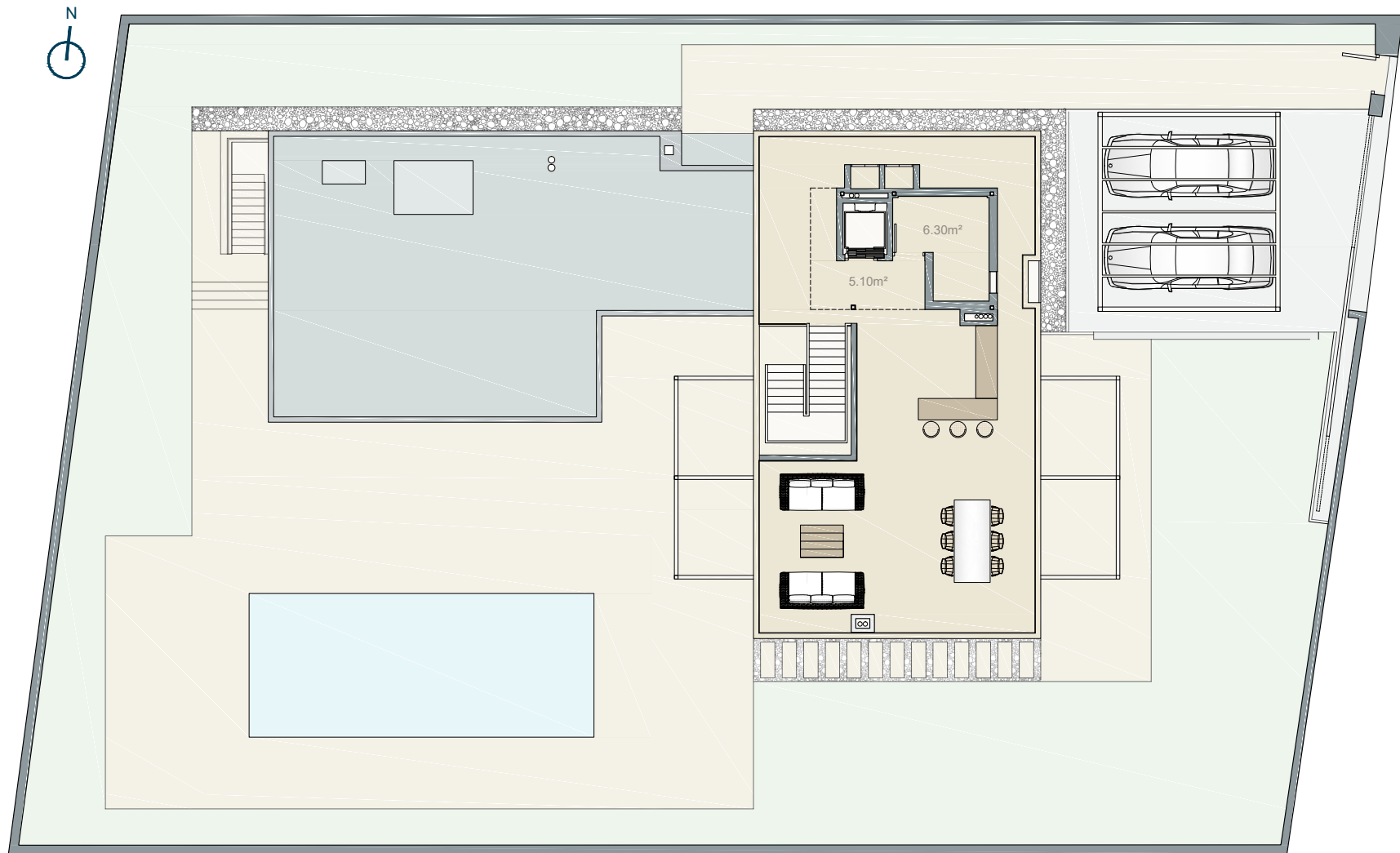
SAND VILLA / GROUND FLOOR

273 sq. mt. built.
814 sq. mt. terraces & garden.
3 bedrooms & 4 bathrooms.



SAND VILLA / FIRST FLOOR

273 sq. mt. built.
814 sq. mt. terraces & garden.
3 bedrooms & 4 bathrooms.



SAND VILLA / SECOND FLOOR

273 sq. mt. built.
814 sq. mt. terraces & garden.
3 bedrooms & 4 bathrooms.

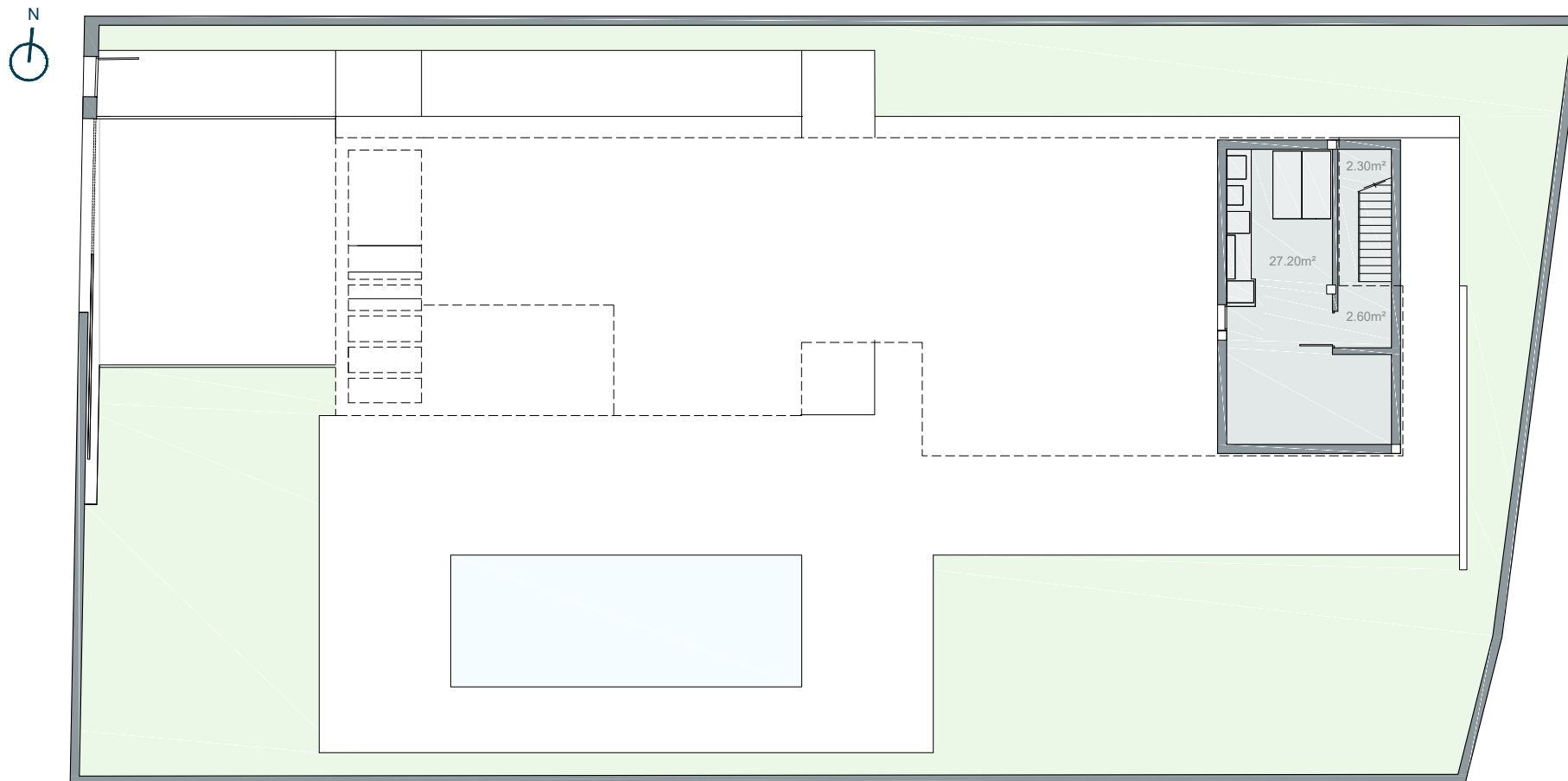


STEEL VILLA



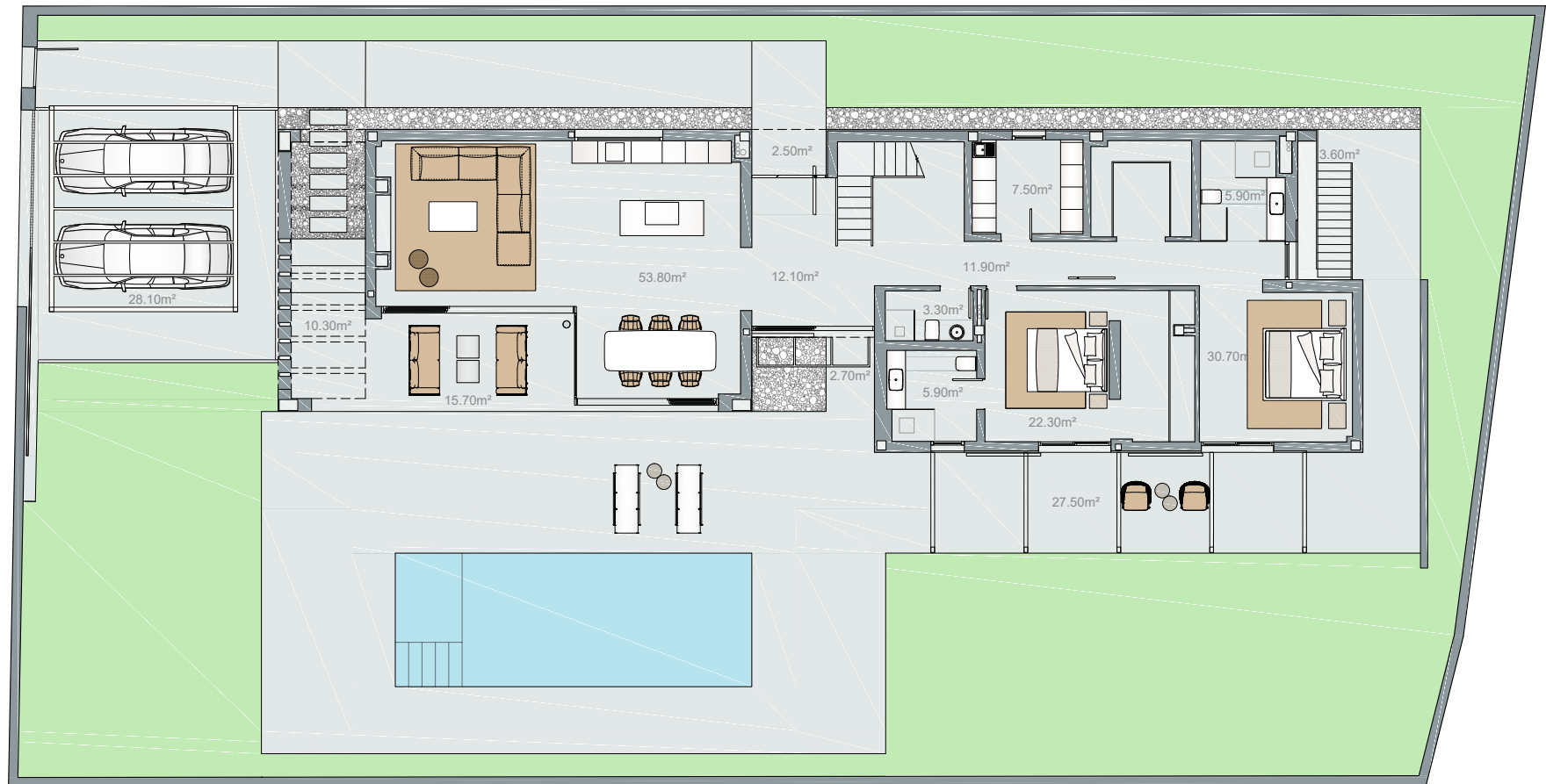
STEEL VILLA

273 sq. mt. built.
814 sq. mt. terraces & garden.
3 bedrooms & 4 bathrooms.



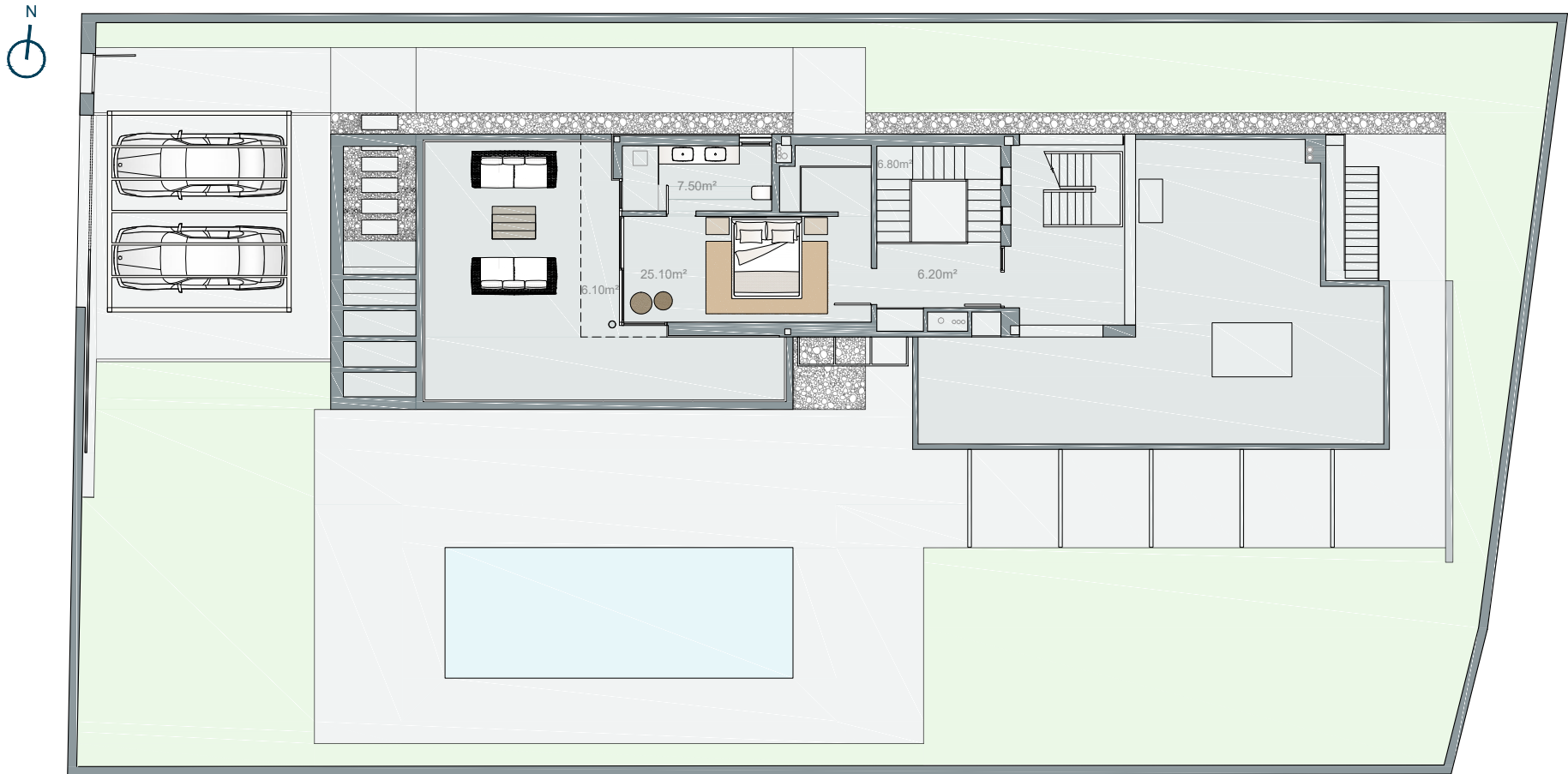
STEEL VILLA / BASEMENT

273 sq. mt. built.
814 sq. mt. terraces & garden.
3 bedrooms & 4 bathrooms.



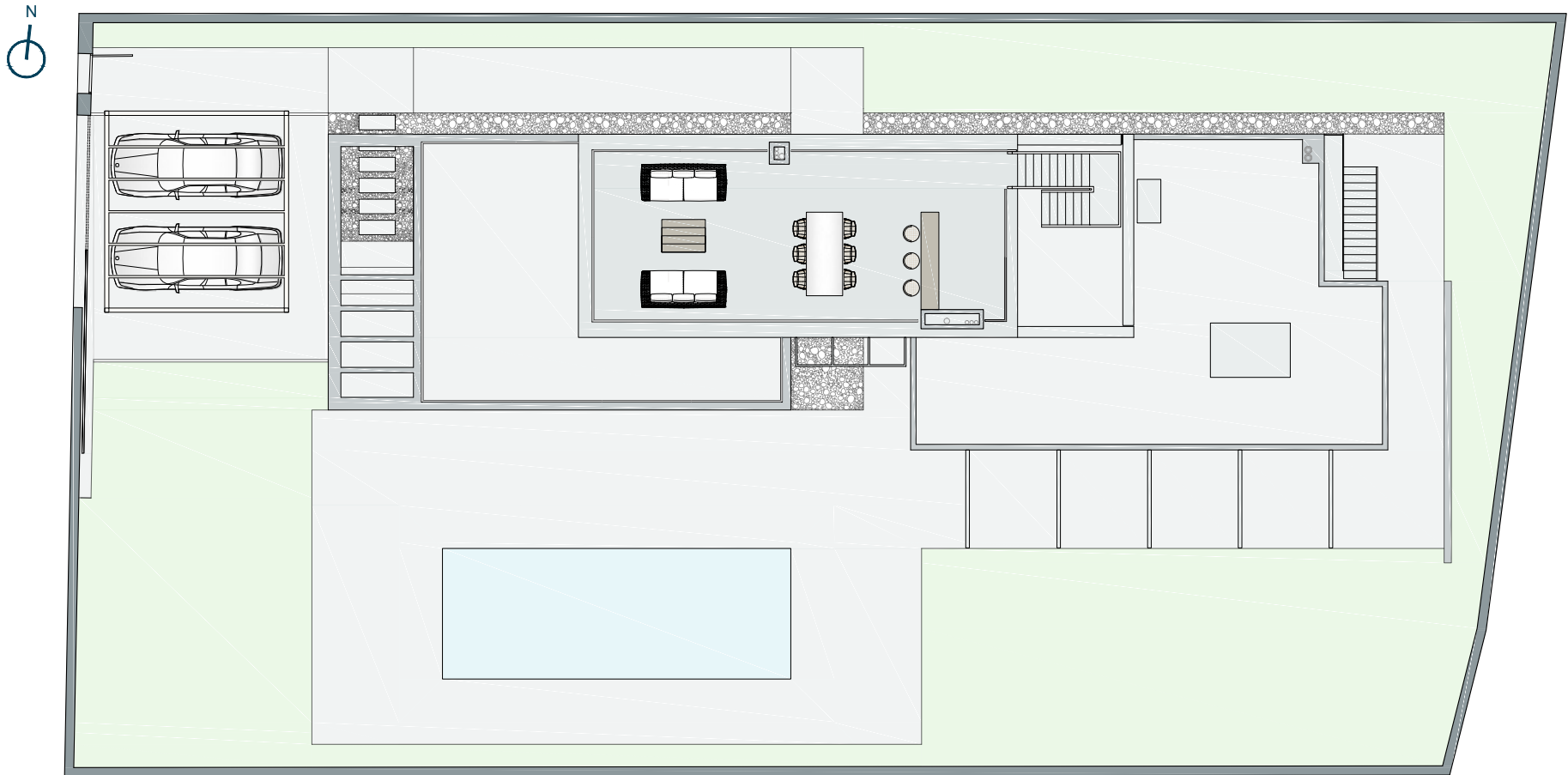
STEEL VILLA / GROUND FLOOR

273 sq. mt. built.
814 sq. mt. terraces & garden.
3 bedrooms & 4 bathrooms.



STEEL VILLA / FIRST FLOOR

273 sq. mt. built.
814 sq. mt. terraces & garden.
3 bedrooms & 4 bathrooms.



STEEL VILLA / SECOND FLOOR

273 sq. mt. built.
814 sq. mt. terraces & garden.
3 bedrooms & 4 bathrooms.

ABOUT BRIAL

Brial is a family-owned company on the verge of its fourth generation, celebrating over 95 years of history and performing its activity in diverse sectors, including real estate promotion, construction, renewable energies and the hospitality sector.

The group's main activity is real estate promotion, in the form of residential complexes and buildings, shopping centres and retail spaces, office buildings, industrial estate urbanization, construction of industrial warehouses and hotels.

This group of companies has promoted over 10.000 residences, developing large projects in Aragón, the Balearic Islands and Castellón.

Brial complements its real estate activities with the promotion and leasing of retail spaces, office buildings and industrial estates. The effort of all these years has been rewarded with the trust of a large number of clients, turning each project into a new challenge, one which adapts to the needs of each moment in time.

Always: guarantee, seriousness and tradition.

The information contained in this brochure has no contractual value, and is only intended as an informative description of the general characteristics of the final result of the development for the purpose of publicising the promotion. As a result, the details may not correspond to the project or the Technical Specifications to be signed with the buyer. Furniture, appliances, accessories, and decoration shown in the images are not included in the sale unless otherwise specified. All the information pertaining to Royal Decree R. D. 515/1989 is available in our offices



Since 1928, moving forward together

INFORMATION

+34 971 108 888

www.whitemedvillas.com